

Parking: Layby
Broad Lane,
RG7 6QH

Parking: Cowslip Crescent
RG18 5BY

Parking: Enterprise Way
RG19 4AE

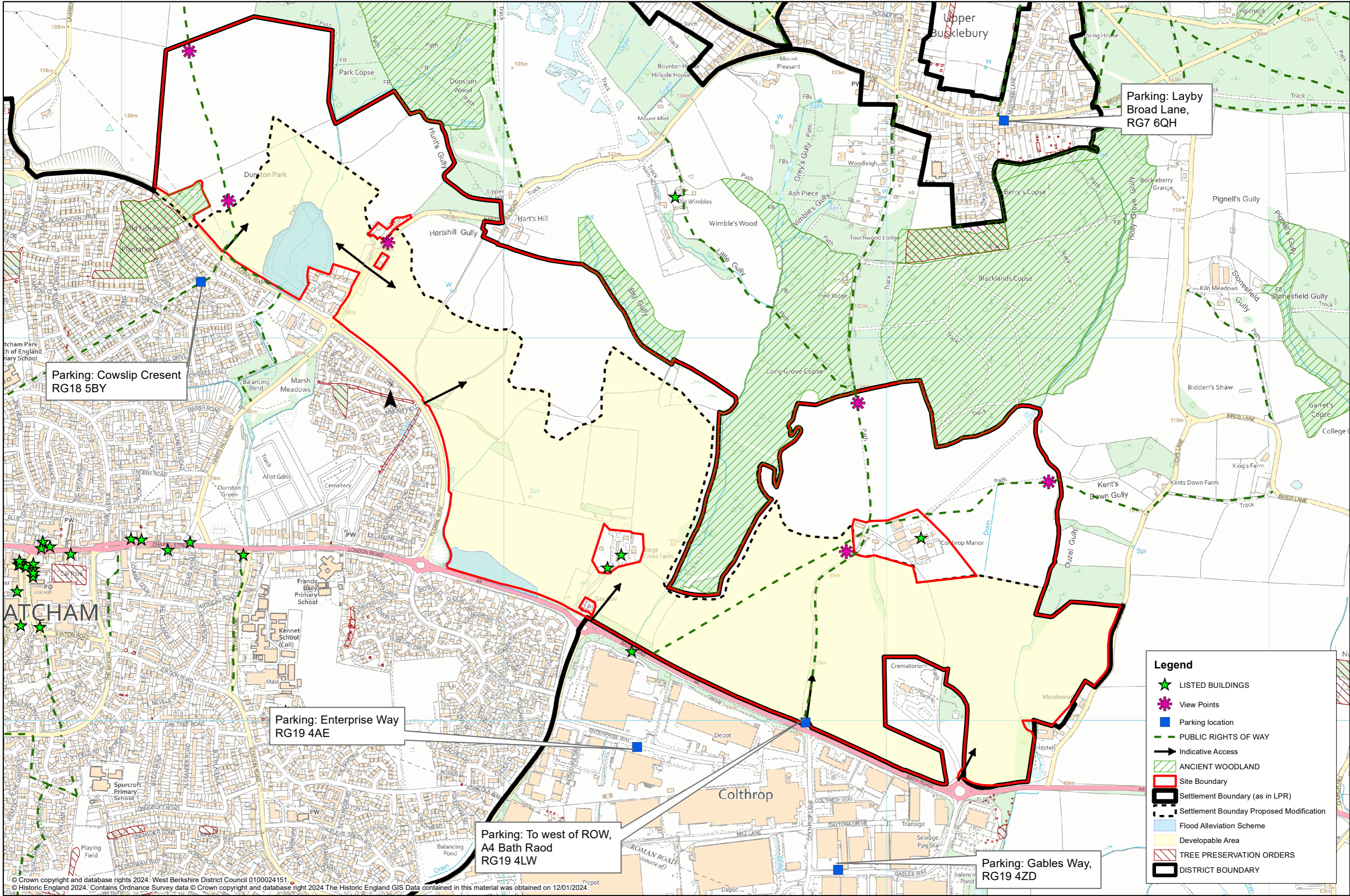
Parking: To west of ROW,
A4 Bath Road
RG19 4LW

Parking: Gables Way,
RG19 4ZD

Legend

- ★ LISTED BUILDINGS
- ✿ View Points
- Parking location
- - - PUBLIC RIGHTS OF WAY
- ➔ Indicative Access
- ▨ ANCIENT WOODLAND
- ▭ Site Boundary
- ▭ Settlement Boundary (as in LPR)
- ▭ Settlement Boundary Proposed Modification
- ▭ Flood Alleviation Scheme
- ▭ Developable Area
- ▨ TREE PRESERVATION ORDERS
- ▭ DISTRICT BOUNDARY

North East Thatcham Site Visit Map



Parking: Cowslip Cresnet
RG18 5BY

Parking: Enterprise Way
RG19 4AE

Parking: To west of ROW,
A4 Bath Raod
RG19 4LW

Parking: Layby
Broad Lane,
RG7 6QH

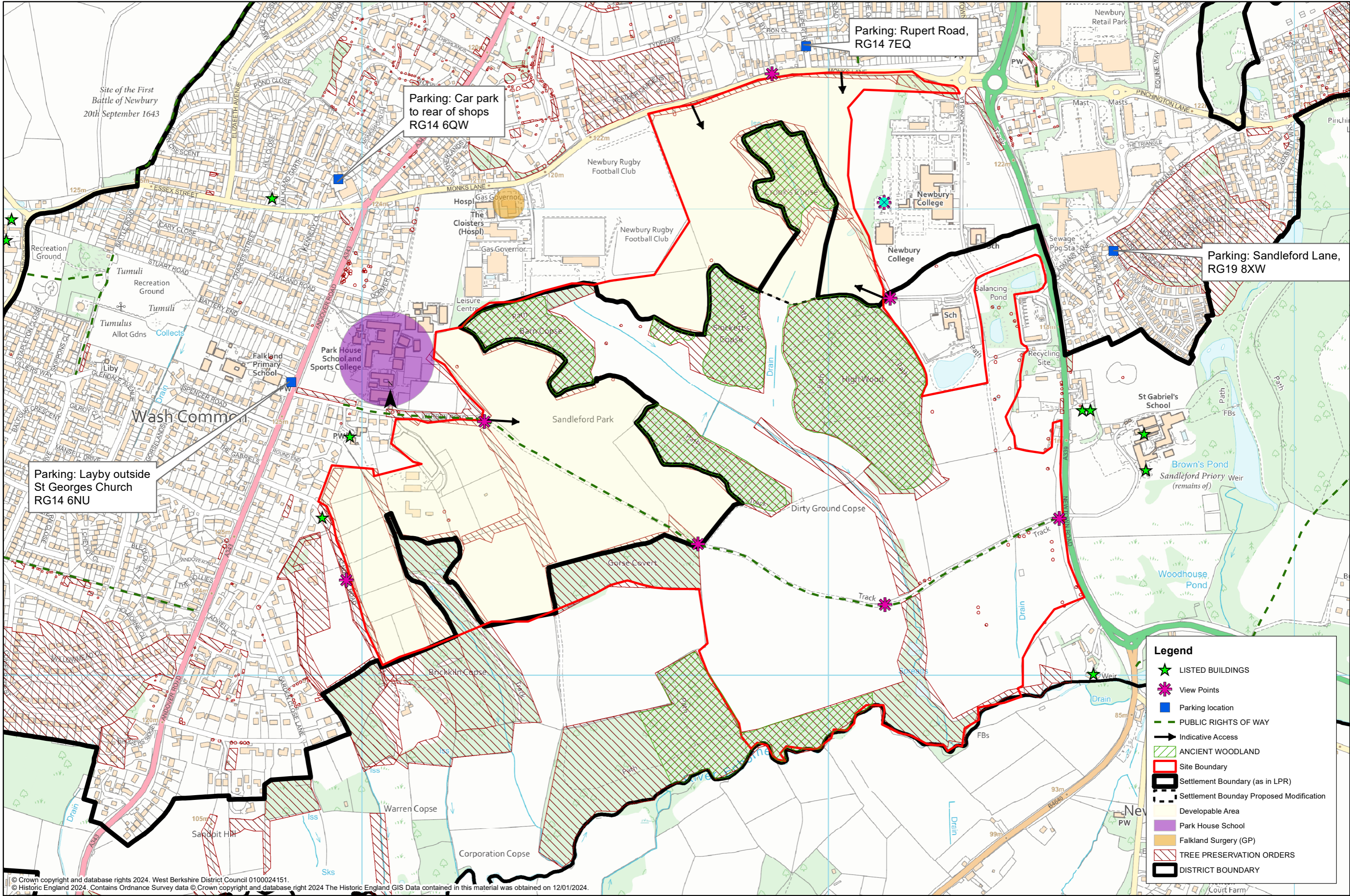
Parking: Gables Way,
RG19 4ZD

Legend

- ★ LISTED BUILDINGS
- ✿ View Points
- Parking location
- PUBLIC RIGHTS OF WAY
- ➔ Indicative Access
- ▨ ANCIENT WOODLAND
- ▭ Site Boundary
- ▭ Settlement Boundary (as in LPR)
- ▭ Settlement Boundary Proposed Modification
- ▭ Flood Alleviation Scheme
- ▭ Developable Area
- ▭ TREE PRESERVATION ORDERS
- ▭ DISTRICT BOUNDARY



Sandleford Park Site Visit Map



Legend

- ★ LISTED BUILDINGS
- ★ View Points
- Parking location
- PUBLIC RIGHTS OF WAY
- Indicative Access
- ▨ ANCIENT WOODLAND
- ▨ Site Boundary
- ▭ Settlement Boundary (as in LPR)
- ▭ Settlement Boundary Proposed Modification
- ▭ Developable Area
- ▭ Park House School
- ▭ Falkland Surgery (GP)
- ▨ TREE PRESERVATION ORDERS
- ▭ DISTRICT BOUNDARY